

# Armstrongs Quarry Pollution Incident Response Management Plan

## ENV-PLA-2219 ARMQ-947

Environment Protection Licence Number: 21780



**Armstrongs Quarry**  
**Dickie Road, Tabbita, NSW**

This document is controlled within the MAWCENTRAL System.  
Please refer to the electronic version on MAWCENTRAL to confirm you have the latest version

	Title	Name	Date
<b>Owner</b>	Quarries Regional Manager - West	Thomas Walter	
<b>Creator</b>	Resource Development Manager NSW	Nicole Robinson	5/02/2024
<b>Approver</b>	Resource Development Advisor	Anne Mawson	27/03/2024

## **Table of Contents**

<b>1. PURPOSE.....</b>	<b>3</b>
<b>2. APPLICATION .....</b>	<b>3</b>
<b>3. ENVIRONMENT PROTECTION LICENCE (EPL) DETAILS .....</b>	<b>4</b>
<b>4. POLLUTION INCIDENT – PERSON/S RESPONSIBLE.....</b>	<b>5</b>
<b>5. NOTIFICATIONS – RELEVANT AUTHORITIES .....</b>	<b>5</b>
<b>6. NOTIFICATIONS – NEIGHBOURS AND THE LOCAL COMMUNITY .....</b>	<b>6</b>
Table 1: Potentially impacted neighbours proximate to Armstrongs Quarry .....	6
<b>7. HAZARDS – DESCRIPTION AND LIKELIHOOD.....</b>	<b>7</b>
<b>8. POLLUTANTS .....</b>	<b>9</b>
<b>9. SAFETY EQUIPMENT .....</b>	<b>9</b>
<b>10. COMMUNICATING WITH NEIGHBOURS AND THE LOCAL COMMUNITY..</b>	<b>9</b>
<b>11. MAPS AND SITE PLANS .....</b>	<b>10</b>
Figure 1: Location of quarry and potentially impacted area.....	10
Figure 2: Location of potentially impacted neighbours proximate to the quarry .....	11
Figure 3: Location of pollutants, safety equipment and surface water drainage onsite .....	12
<b>12. INCIDENT RESPONSE.....</b>	<b>13</b>
<b>13. COORDINATING WITH PERSONS.....</b>	<b>16</b>
<b>14. TRAINING .....</b>	<b>16</b>
<b>15. TESTING AND UPDATING PIRMP .....</b>	<b>16</b>
<b>16. DOCUMENT HISTORY.....</b>	<b>16</b>

### 1. PURPOSE

E.B. Mawson & Sons Pty Ltd holds an Environment Protection Licence with the NSW Environment Protection Authority (EPA) for the Milbrae Armstrongs Quarry. As per the *Protection of the Environment Operations Act 1997* (the POEO Act), the holder of an Environment Protection Licence must prepare, keep, test and implement a pollution incident response management plan (PIRMP) that complies with Part 5.7A of the POEO Act in relation to the activity to which the licence relates.

If a pollution incident occurs in the course of an activity so that material harm to the environment (within the meaning of section 147 of the POEO Act) is caused or threatened, the person carrying out the activity must **immediately** implement this plan in relation to the activity required by Part 5.7A of the POEO Act.

A copy of this plan must be kept at the licensed premises, or where the activity takes place in the case of mobile plant licences, and be made available on request by an authorised EPA officer and to any person who is responsible for implementing this plan.

Parts of the plan must also be available either on a publicly accessible website, or if there is no such website, by providing a copy of the plan to any person who makes a written request. The sections of the plan that are required to be publicly available are set out in section 74 of the Protection of the Environment Operations (General) Regulation 2022.

### 2. APPLICATION

This plan must be activated in the event of a *pollution incident* that causes or threatens *material harm* to the environment.

**Pollution incident** means a leak, spill or other escape or deposit of a substance, which causes or is likely to cause pollution (does not include an incident involving only the emission of noise).

**Pollution** means (broadly) release or introduction of any substance to air, land or water.

**Material harm** means actual or potential harm to health or safety of human beings or ecosystems that is not trivial, cost to make good exceeds \$10,000. Includes incidents that only impact the premises where the incident occurs.

**3. ENVIRONMENT PROTECTION LICENCE (EPL) DETAILS**

Responsibility	Person Responsible
<b>PIRMP activation</b>	<b>Name:</b> Thomas Walter <b>Position or title:</b> Regional Quarry Manager <b>Business hours contact number:</b> 0407 324 586 <b>After hours contact number/s:</b> 0407 324 586 <b>Email:</b> <i><a href="mailto:twalter@mawsons.com.au">twalter@mawsons.com.au</a></i>
<b>Notifying relevant authorities</b>  Notification should be made by a person with an appropriate level of authority within the company.	<b>Name:</b> Nicole Robinson <b>Position or title:</b> Environment and Compliance Manager <b>Business hours contact number:</b> 0428 141 760 <b>After hours contact number/s:</b> 0428 141 760 <b>Email:</b> <i><a href="mailto:nrobinson@mawsons.com.au">nrobinson@mawsons.com.au</a></i>
<b>Managing response to pollution incident</b>	<b>Name:</b> Thomas Walter <b>Position or title:</b> Regional Quarry Manager <b>Business hours contact number:</b> 0407 324 586 <b>After hours contact number/s:</b> 0407 324 586 <b>Email:</b> <i><a href="mailto:twalter@mawsons.com.au">twalter@mawsons.com.au</a></i>

**4. POLLUTION INCIDENT – PERSON/S RESPONSIBLE**

Responsibility	Person Responsible
<b>PIRMP activation</b>	<b>Name:</b> Thomas Walter <b>Position or title:</b> Regional Quarry Manager <b>Business hours contact number:</b> 0407 324 586 <b>After hours contact number/s:</b> 0407 324 586 <b>Email:</b> <a href="mailto:twalter@mawsons.com.au">twalter@mawsons.com.au</a>
<b>Notifying relevant authorities</b>  Notification should be made by a person with an appropriate level of authority within the company.	<b>Name:</b> Nicole Robinson <b>Position or title:</b> Environment and Compliance Manager <b>Business hours contact number:</b> 0428 141 760 <b>After hours contact number/s:</b> 0428 141 760 <b>Email:</b> <a href="mailto:nrobinson@mawsons.com.au">nrobinson@mawsons.com.au</a>
<b>Managing response to pollution incident</b>	<b>Name:</b> Thomas Walter <b>Position or title:</b> Regional Quarry Manager <b>Business hours contact number:</b> 0407 324 586 <b>After hours contact number/s:</b> 0407 324 586 <b>Email:</b> <a href="mailto:twalter@mawsons.com.au">twalter@mawsons.com.au</a>

**5. NOTIFICATIONS – RELEVANT AUTHORITIES**

Incidents that cause or threaten material harm (actual or potential harm that is not trivial, e.g. loss/damage ~ \$10,000) must be reported to all relevant authorities **immediately**.

Authority	Contact Number
<b>Fire and Rescue NSW / Rural Fire Service (first notification)</b>	000
<b>EPA</b>	131 555
<b>NSW Health – Murrumbidgee Local Health District</b>	1800 011 824
<b>SafeWork NSW</b>	131 050
<b>Local authority – Carrathool Shire Council</b>	02 6965 1900
<b>NSW Resources Regulator</b>	1300 814 609

**6. NOTIFICATIONS – NEIGHBOURS AND THE LOCAL COMMUNITY**

Neighbours potentially impacted by a pollution incident at Armstrongs Quarry are those listed in [REDACTED], that are within approximately 1km of the quarry (see **Figure 1** in Section [REDACTED]).

Notification of neighbours is the responsibility of the Regional Quarry Manager but may be delegated to a suitably trained person at the discretion of the Regional Quarry Manager and in consultation with the Environment and Compliance Manager. It is the responsibility of the Regional Quarry Manager to inform and update the Environment and Compliance Manager and to record the incident in O4i in accordance with ENV-PRO-001 Environmental Incident Management Procedure.

[REDACTED]

[REDACTED]	[REDACTED]	[REDACTED]	[REDACTED]	[REDACTED]
1	[REDACTED]	[REDACTED]	[REDACTED]	[REDACTED]
1	[REDACTED]	[REDACTED]	[REDACTED]	[REDACTED]



7. HAZARDS – DESCRIPTION AND LIKELIHOOD

Hazard	Pollution Incident (Material Harm)	Risk Assessment Prior to Pre-emptive Actions			Pre-emptive Actions	Risk Assessment After Pre-emptive Actions			Monitoring and Continuous Improvement	
		Inherent Risk				Residual Risk			Aspect to be Monitored	Details of Monitoring and Continuous Improvement
		Likelihood	Consequence	Risk Rating		Likelihood	Consequence	Risk Rating		
Dust	Excessive dust resulting in nuisance to neighbours	Likely	Minor	Medium	<ul style="list-style-type: none"> <li>Compliance with approved operating hours</li> <li>Exposed/disturbed areas minimised and revegetation undertaken progressively to reduce exposed/disturbed areas</li> <li>Water sprays installed and operational at critical locations on processing plant</li> <li>Drill rig fitted with engineered dust extraction/suppression</li> <li>Water cart utilised on exposed areas, roads and hardstands</li> <li>Site access roads and haul roads adequately maintained and appropriately speed limited</li> <li>Dust generating plant shut down during dust amplifying weather conditions</li> <li>Material drop heights for stockpiles reduced</li> </ul>	Unlikely	Minor	Low	Air quality as per ENV-PLA-001 Air Quality Management Plan	<ul style="list-style-type: none"> <li>Monitoring to be conducted in accordance with ENV-PLA-001 Air Quality Management Plan</li> <li>Monitoring as part of environmental inspections (as per ENV-PRO-002 Environmental Risk Management Procedure) as well as opportunistic site visits</li> <li>Community interactions (including complaints) to be recorded and reported where appropriate</li> </ul>
Dust	Excessive dust resulting in health impacts to neighbours	Unlikely	Moderate	Medium		Rare	Minor	Low		
Dust	Excessive dust resulting in biodiversity impacts	Possible	Minor	Medium		Unlikely	Minor	Low		
Surface Water	Unauthorised discharge of wastewater resulting in ecosystem damage to receiving waterway	Possible	Moderate	Medium	<ul style="list-style-type: none"> <li>Access and haul roads designed with sufficient diversion drains and culverts to ensure stormwater is diverted away from receiving waterways</li> <li>Access and haul roads graded and orientated to slow the flow of stormwater</li> <li>Stormwater directed to sumps</li> <li>Surface water drainage line/waterway kept free of debris and diversion structures employed to direct stormwater away from them</li> <li>Erosion and sediment control structures employed to prevent the sedimentation of receiving waterway</li> <li>Exposed/disturbed areas minimised and revegetation undertaken progressively to reduce exposed/disturbed areas</li> </ul>	Unlikely	Minor	Low	Water quality as per and Armstrongs Quarry Surface Water Management Plan	<ul style="list-style-type: none"> <li>Monitoring to be conducted in accordance with Armstrongs Quarry Surface Water Management Plan</li> <li>Monitoring as part of environmental inspections (as per ENV-PRO-002 Environmental Risk Management Procedure) as well as opportunistic site visits</li> </ul>
Surface Water	Localised flooding as a result of quarry impacts on surface water systems resulting in impacts to neighbours	Possible	Moderate	Medium		Unlikely	Minor	Low		
Surface Water	Sedimentation resulting in ecosystem damage to receiving waterway	Possible	Minor	Medium		Unlikely	Minor	Low		
Groundwater	Groundwater contamination resulting in aquifer pollution	Unlikely	Moderate	Medium	<ul style="list-style-type: none"> <li>Hydrocarbons stored in appropriately bunded areas (as per Figure 3)</li> <li>Adequate spill kits are available on site and training is provided in their use</li> <li>Storage of hydrocarbons is audited during environmental inspections and opportunistic site visits</li> </ul>	Unlikely	Minor	Low	Water quality as per and Armstrongs Quarry Surface Water Management Plan	<ul style="list-style-type: none"> <li>Monitoring to be conducted in accordance with Armstrongs Quarry Surface Water Management Plan</li> <li>Monitoring as part of environmental inspections (as per ENV-PRO-002 Environmental Risk Management Procedure) as well as opportunistic site visits</li> </ul>
Fire	Uncontrolled fire started or exacerbated as a result of quarry activities resulting in impacts to neighbours	Possible	Major	High	<ul style="list-style-type: none"> <li>Plant and equipment is well maintained and fitted with spark arrestors and fire extinguishers</li> <li>No "hot works" undertaken on days of Total Fire Ban without written approval of RFS</li> <li>Liaison with RFS undertaken in times of extreme fire danger</li> <li>Refuelling and servicing conducted in designated areas</li> </ul>	Rare	Moderate	Medium	<ul style="list-style-type: none"> <li>Emergency warnings</li> <li>Extreme weather</li> <li>Total Fire Ban days</li> </ul>	<ul style="list-style-type: none"> <li>Environmental inspections (as per ENV-PRO-002 Environmental Risk Management Procedure) as well as opportunistic site visits</li> </ul>

Hazard	Pollution Incident (Material Harm)	Risk Assessment Prior to Pre-emptive Actions			Pre-emptive Actions	Risk Assessment After Pre-emptive Actions			Monitoring and Continuous Improvement	
		Inherent Risk				Residual Risk			Aspect to be Monitored	Details of Monitoring and Continuous Improvement
		Likelihood	Consequence	Risk Rating		Likelihood	Consequence	Risk Rating		
Fuels, Lubricants and Other Hazardous Materials	Spill resulting in ecosystem damage to receiving waterway	Possible	Moderate	Medium	<ul style="list-style-type: none"> <li>Storage and handling of hydrocarbons is in accordance with AS 1940 and the Dangerous Goods Act 1975</li> <li>Hydrocarbons stored in appropriately bunded areas (as per Figure 3)</li> <li>Adequate spill kits are available on site and training is provided in their use</li> <li>Storage of hydrocarbons is audited during environmental inspections and opportunistic site visits</li> </ul>	Unlikely	Minor	Low	Water quality as per and Armstrongs Quarry Surface Water Management Plan	<ul style="list-style-type: none"> <li>Monitoring to be conducted in accordance with Water quality as per and Armstrongs Quarry Surface Water Management Plan</li> <li>Monitoring as part of environmental inspections (as per ENV-PRO-002 Environmental Risk Management Procedure) as well as opportunistic site visits</li> </ul>
Fuels, Lubricants and Other Hazardous Materials	Spill resulting in terrestrial ecosystem damage	Possible	Moderate	Medium		Unlikely	Minor	Low	Area around hydrocarbon storages	<ul style="list-style-type: none"> <li>Monitoring as part of environmental inspections (as per ENV-PRO-002 Environmental Risk Management Procedure) as well as opportunistic site visits</li> </ul>
Pests, Weeds and Diseases	Incursions resulting in ecosystem damage	Possible	Moderate	Medium	<ul style="list-style-type: none"> <li>Appropriately licensed personnel engaged to undertake pest plant and animal control</li> <li>Control of pest plant and animals, and diseases audited during environmental inspections and opportunistic site visits</li> </ul>	Unlikely	Minor	Low	Presence and control of pest plants and animals, and diseases as part of regular site inspections	<ul style="list-style-type: none"> <li>Monitoring of presence and control of pest plants and animals, and diseases as part of regular site inspections</li> <li>Monitoring as part of environmental inspections (as per ENV-PRO-002 Environmental Risk Management Procedure) as well as opportunistic site visits</li> </ul>



## 8. POLLUTANTS

Figure 3 in Section **Error! Reference source not found.** provides the locations of pollutants described in the table below.

Location/tank	Pollutant	Maximum Volume
Self-bunded mobile fuel trailer	Diesel fuel	2000 L
Workshop equipped with pallet bunds	Oils/lubricants	200 L

## 9. SAFETY EQUIPMENT

Figure 3 in Section **Error! Reference source not found.** provides the locations of safety equipment described in the table below.

Equipment	Location
Fire extinguishers	In all buildings, on mobile equipment and in light vehicles
Spill kits	Workshop
Bunding	Bunded pallets for oil/lubricants in workshop
Personal Protective Equipment (PPE)	Provided and required to be used in accordance with WHS-PRO-017 Personal Protective Equipment (PPE) Procedure
First aid kits	Workshop

## 10. COMMUNICATING WITH NEIGHBOURS AND THE LOCAL COMMUNITY

Each neighbour within the PIRMP Potentially Impacted Area (as identified in **Error! Reference source not found.**) will receive an in-person visit from Mawsons/Milbrae staff and a copy of this PIRMP with explanation of contact details for notifying Mawsons/Milbrae of complaints or concerns.

### Specific messages in the event of a material pollution incident:

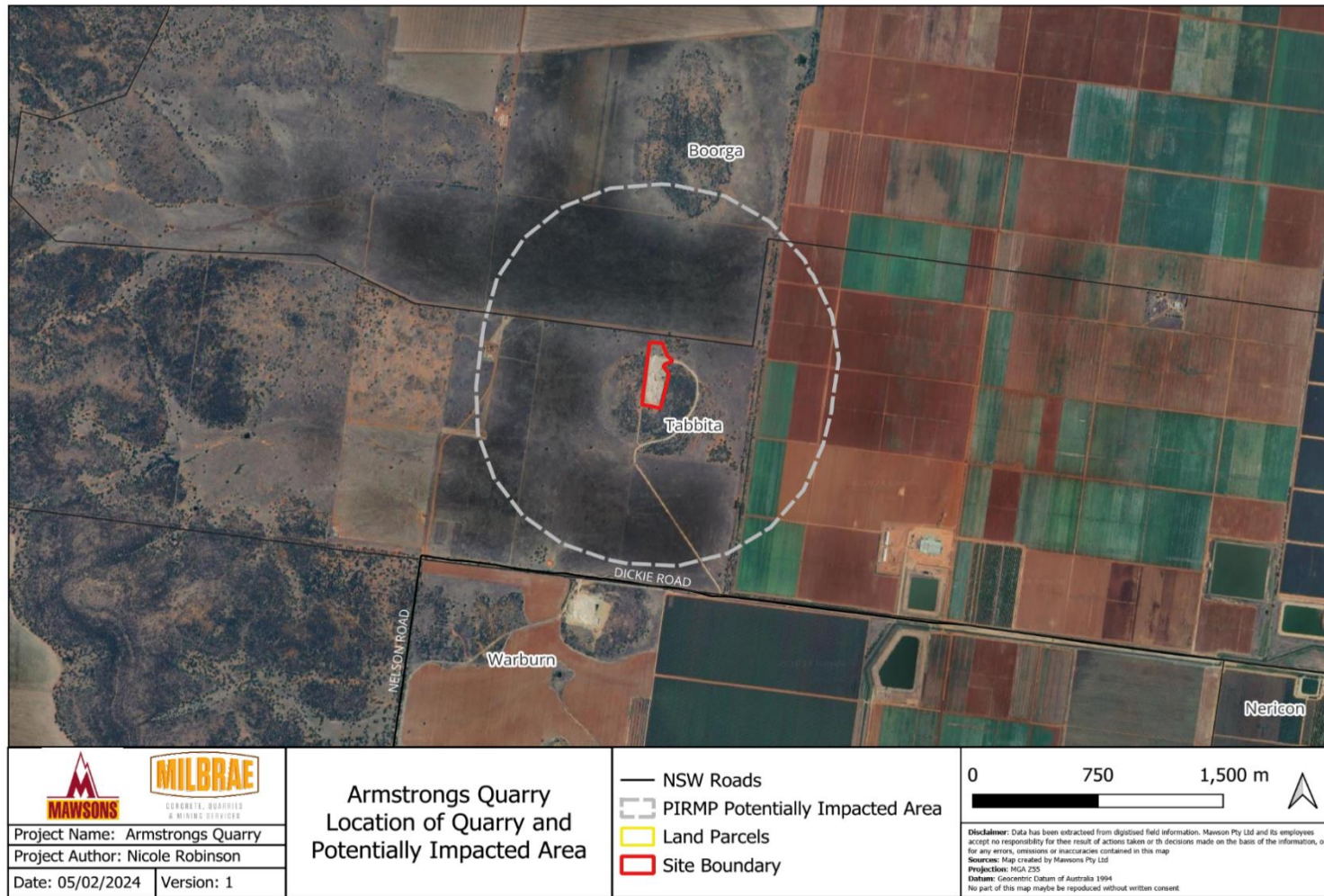
- Dust – persons in the affected area should close windows and doors and remain inside until advised otherwise by Mawsons or emergency services.
- Dust, silt or clay on roads – avoid impacted roads
- Fire – implement fire safety plan and follow advice of emergency services
- Spill to waterways – avoid entering or fishing in downstream waterways
- Pests, weeds and disease – type of pest, weed or disease, location of outbreak, maintain vigilance

### Minimising harm to persons on the premises

- Evacuate and assemble at the evacuation point at the front entry gate
- Initiate notifications, including emergency services
- Activate the emergency response plan

REACTED WEBSITE VERSION

**11. MAPS AND SITE PLANS**



*Figure 1: Location of quarry and potentially impacted area*



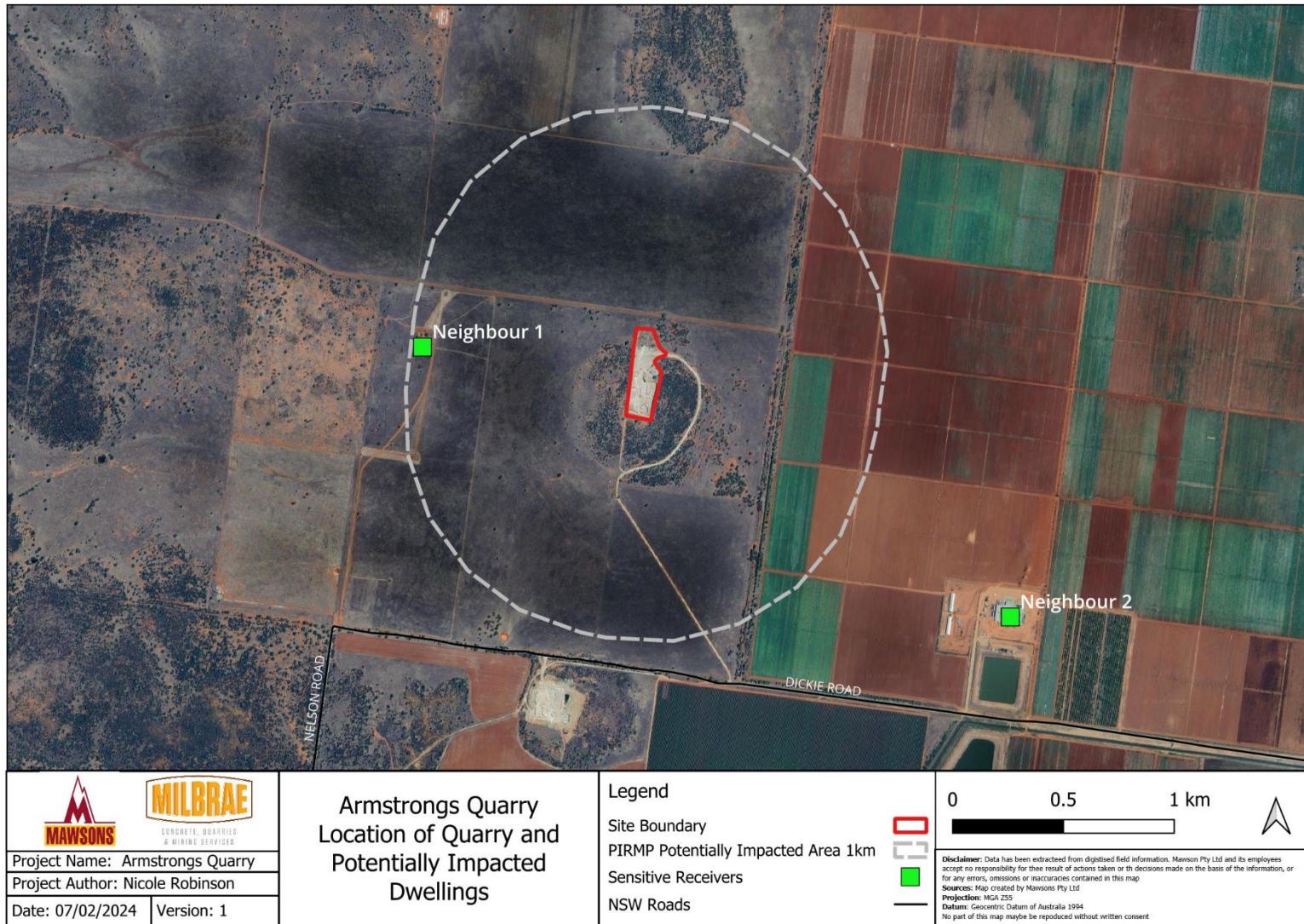
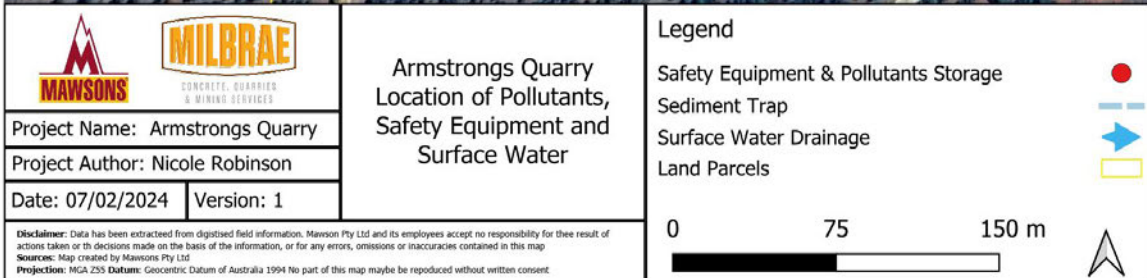


Figure 2: Location of potentially impacted neighbours proximate to the quarry





*Figure 3: Location of pollutants, safety equipment and surface water drainage onsite*



## 12. INCIDENT RESPONSE

Actions to be taken during or immediately after a pollution incident and the person responsible.

**Note:** Actions should only be taken if safe to do so.

		Immediate Response	Early Warning		Mitigation Actions		Communication Updates		Clean Up		Close Out		
		Quarry Manager	Quarry Manager	Environment and Compliance Manager	Quarry Manager	Environment and Compliance Manager	Quarry Manager	Environment and Compliance Manager	Quarry Manager	Environment and Compliance Manager	Quarry Manager	Environment and Compliance Manager	
<b>Incident (Material Harm)</b>	Dust	Excessive dust resulting in nuisance to neighbours	Shut down dust generating plant and/or equipment	Text message to neighbours	Notify EPA	<ul style="list-style-type: none"> <li>Identify source of excessive dust generation</li> <li>Activate dust suppression if not already active</li> <li>Redirect water cart to most heavily affected area</li> </ul>	<ul style="list-style-type: none"> <li>Review weather data</li> <li>Assess clean up obligations</li> </ul>	Text message to neighbours	Update EPA	As directed by Environment and Compliance Manager	Liaise with Quarry Manager to ensure clean up meets obligations	<ul style="list-style-type: none"> <li>Text message to neighbours</li> <li>Report incident in O4i</li> <li>Provide information for investigation</li> </ul>	<ul style="list-style-type: none"> <li>Conduct investigation</li> <li>Provide report to EPA</li> </ul>
	Dust	Excessive dust resulting in health impacts to neighbours	Shut down dust generating plant and/or equipment	Phone call to neighbours	Notify EPA	<ul style="list-style-type: none"> <li>Identify source of excessive dust generation</li> <li>Activate dust suppression if not already active</li> <li>Redirect water cart to most heavily affected area</li> </ul>	<ul style="list-style-type: none"> <li>Identify area of impact</li> <li>Assess clean up obligations</li> <li>Engage WHS team</li> <li>Engage other regulators and/or agencies as required</li> </ul>	Phone call to neighbours	Update EPA	Engage contractor to clean exteriors of impacted residences and rainwater tanks, re-fill tanks	Liaise with contractor to ensure clean up meets obligations	<ul style="list-style-type: none"> <li>Phone call to neighbours</li> <li>Report incident in O4i</li> <li>Provide information for investigation</li> </ul>	<ul style="list-style-type: none"> <li>Conduct investigation</li> <li>Provide report to EPA</li> </ul>
	Dust	Excessive dust resulting in biodiversity impacts	Shut down dust generating plant and/or equipment		Notify EPA	<ul style="list-style-type: none"> <li>Identify source of excessive dust generation</li> <li>Activate dust suppression if not already active</li> <li>Redirect water cart to most heavily affected area</li> </ul>	<ul style="list-style-type: none"> <li>Review weather data</li> <li>Assess clean up obligations</li> </ul>		Update EPA	As directed by Environment and Compliance Manager	Liaise with Quarry Manager to ensure clean up meets obligations	<ul style="list-style-type: none"> <li>Report incident in O4i</li> <li>Provide information for investigation</li> </ul>	<ul style="list-style-type: none"> <li>Conduct investigation</li> <li>Provide report to EPA</li> </ul>

		Immediate Response	Early Warning		Mitigation Actions		Communication Updates		Clean Up		Close Out	
		Quarry Manager	Quarry Manager	Environment and Compliance Manager	Quarry Manager	Environment and Compliance Manager	Quarry Manager	Environment and Compliance Manager	Quarry Manager	Environment and Compliance Manager	Quarry Manager	Environment and Compliance Manager
Surface Water	Unauthorised discharge of wastewater resulting in ecosystem damage to receiving waterway	Divert water to sump or away from sensitive receiving environment		Notify EPA	Collect water samples for analysis	Assess clean up obligations		Update EPA	As directed by Environment and Compliance Manager	Liaise with Quarry Manager to ensure clean up meets obligations	<ul style="list-style-type: none"> <li>Report incident in O4i</li> <li>Provide information for investigation</li> </ul>	<ul style="list-style-type: none"> <li>Conduct investigation</li> <li>Provide report to EPA</li> </ul>
Surface Water	Localised flooding as a result of quarry impacts on surface water systems resulting in impacts to neighbours	Divert water to sump or away from sensitive receiving environment	Phone call to neighbours	Notify EPA	Collect water samples for analysis	<ul style="list-style-type: none"> <li>Engage WHS team</li> <li>Engage other regulators and/or agencies as required</li> <li>Assess clean up obligations</li> <li>Review weather data</li> </ul>	Phone call to neighbours	Update EPA	As directed by Environment and Compliance Manager	Liaise with Quarry Manager to ensure clean up meets obligations	<ul style="list-style-type: none"> <li>Phone call to neighbours</li> <li>Report incident in O4i</li> <li>Provide information for investigation</li> </ul>	<ul style="list-style-type: none"> <li>Conduct investigation</li> <li>Provide report to EPA</li> </ul>
Surface Water	Sedimentation resulting in ecosystem damage to receiving waterway	Divert water to sump or away from sensitive receiving environment		Notify EPA	<ul style="list-style-type: none"> <li>Install sediment control devices</li> <li>Collect water samples for analysis</li> </ul>	Assess clean up obligations		Update EPA	As directed by Environment and Compliance Manager	Liaise with Quarry Manager to ensure clean up meets obligations	<ul style="list-style-type: none"> <li>Report incident in O4i</li> <li>Provide information for investigation</li> </ul>	<ul style="list-style-type: none"> <li>Conduct investigation</li> <li>Provide report to EPA</li> </ul>
Groundwater	Groundwater contamination resulting in aquifer pollution	Divert contamination source to sump or away from sensitive receiving environment			Collect water samples for analysis	Assess clean up obligations		Update EPA	As directed by Environment and Compliance Manager	Liaise with Quarry Manager to ensure clean up meets obligations	<ul style="list-style-type: none"> <li>Report incident in O4i</li> <li>Provide information for investigation</li> </ul>	<ul style="list-style-type: none"> <li>Conduct investigation</li> <li>Provide report to EPA</li> </ul>
Fire	Uncontrolled fire started or exacerbated as a result of quarry activities resulting in impacts to neighbours	<ul style="list-style-type: none"> <li>Call 000</li> <li>Stop Work</li> <li>Close Site</li> </ul>	Phone call to neighbours		Activate ENV-PLA-002 Bushfire Preparedness and Response Plan	<ul style="list-style-type: none"> <li>Engage WHS team</li> <li>Engage other regulators and/or agencies as required</li> </ul>	Phone call to neighbours		As directed by Environment and Compliance Manager	<ul style="list-style-type: none"> <li>Assess clean up obligations</li> <li>Liaise with Quarry Manager to ensure clean up meets obligations</li> </ul>	<ul style="list-style-type: none"> <li>Phone call to neighbours</li> <li>Report incident in O4i</li> <li>Provide information for investigation</li> </ul>	Support WHS team to conduct investigation
Fuels, Lubricants and Other Hazardous Materials	Hydrocarbon spill resulting in ecosystem damage to receiving waterway	Stop spill at the source		Notify EPA	Collect water samples for analysis	Assess clean up obligations		Update EPA	As directed by Environment and Compliance Manager	<ul style="list-style-type: none"> <li>Assess clean up obligations</li> <li>Liaise with Quarry Manager to ensure clean up meets obligations</li> </ul>	<ul style="list-style-type: none"> <li>Report incident in O4i</li> <li>Provide information for investigation</li> </ul>	<ul style="list-style-type: none"> <li>Conduct investigation</li> <li>Provide report to EPA</li> </ul>

		Immediate Response	Early Warning		Mitigation Actions		Communication Updates		Clean Up		Close Out		
		Quarry Manager	Quarry Manager	Environment and Compliance Manager	Quarry Manager	Environment and Compliance Manager	Quarry Manager	Environment and Compliance Manager	Quarry Manager	Environment and Compliance Manager	Quarry Manager	Environment and Compliance Manager	
	Fuels, Lubricants and Other Hazardous Materials	Hydrocarbon spill resulting in terrestrial ecosystem damage	Stop spill at the source		Notify EPA	Collect soil samples for analysis	Assess clean up obligations		Update EPA	As directed by Environment and Compliance Manager	<ul style="list-style-type: none"> <li>Assess clean up obligations</li> <li>Liaise with Quarry Manager to ensure clean up meets obligations</li> </ul>	<ul style="list-style-type: none"> <li>Report incident in O4i</li> <li>Provide information for investigation</li> </ul>	<ul style="list-style-type: none"> <li>Conduct investigation</li> <li>Provide report to EPA</li> </ul>
	Pests, Weeds and Diseases	Pest plant or animal incursion resulting in ecosystem damage	Control traffic movements to prevent spread	Text message to neighbours	Notify Local Control Authority (LCA) - Carrathool Shire Council	Assess the extent of the incursion	<ul style="list-style-type: none"> <li>Engage with LCA's Local Weeds Officer for advice and develop a control plan</li> <li>Engage other regulators and/or agencies as required</li> </ul>	Text message to neighbours	Update LCA	Engage suitably qualified contractor to conduct control or eradication works	Liaise with contractor to ensure clean up meets obligations	<ul style="list-style-type: none"> <li>Report incident in O4i</li> <li>Provide information for investigation</li> </ul>	<ul style="list-style-type: none"> <li>Conduct investigation</li> <li>Provide report to LCA</li> </ul>

### 13. COORDINATING WITH PERSONS

Initial notifications and status updates to neighbours will be undertaken by the Regional Quarry Manager or their delegate as described in Section **Error! Reference source not found.**

Initial notifications to regulatory authorities will be undertaken by the Environment and Compliance Manager or their delegate.

Coordination with regulatory authorities and emergency responders that attend site will be managed by the Regional Quarry Manager or their delegate.

Status updates to, regulatory authorities, and emergency responders that are not on site will be managed by the Environment and Compliance Manager or their delegate.

### 14. TRAINING

Nature of Training	Training Objectives
Site Induction	Ensure that all personnel entering the site are aware of the hazards and control measures and any specific site conditions within the quarry
Emergency Response	During the testing of this PRIMP workers will have the opportunity to be trained on the emergency response equipment such as the spill kit contents and use of these items.

### 15. TESTING AND UPDATING PIRMP

It is a legal requirement to test the plan every 12 months and within one month of any pollution incident that caused or threatened material harm to the environment.

The PIRMP testing form is hosted on the Mawsons intranet at [https://mawsons.integralcs.com/inform/manageinformformrecord/subpageadd/form\\_id/300](https://mawsons.integralcs.com/inform/manageinformformrecord/subpageadd/form_id/300). Actions and updates to the PIRMP are also managed through the Mawsons intranet.

### 16. DOCUMENT HISTORY

Revision #	Date	Amended By	Reason for Changes
1	07/02/2024		Document created